

Certified
Realty, Inc.

3310 BLUFF CREEK DR. SUITE 106

Columbia, Missouri



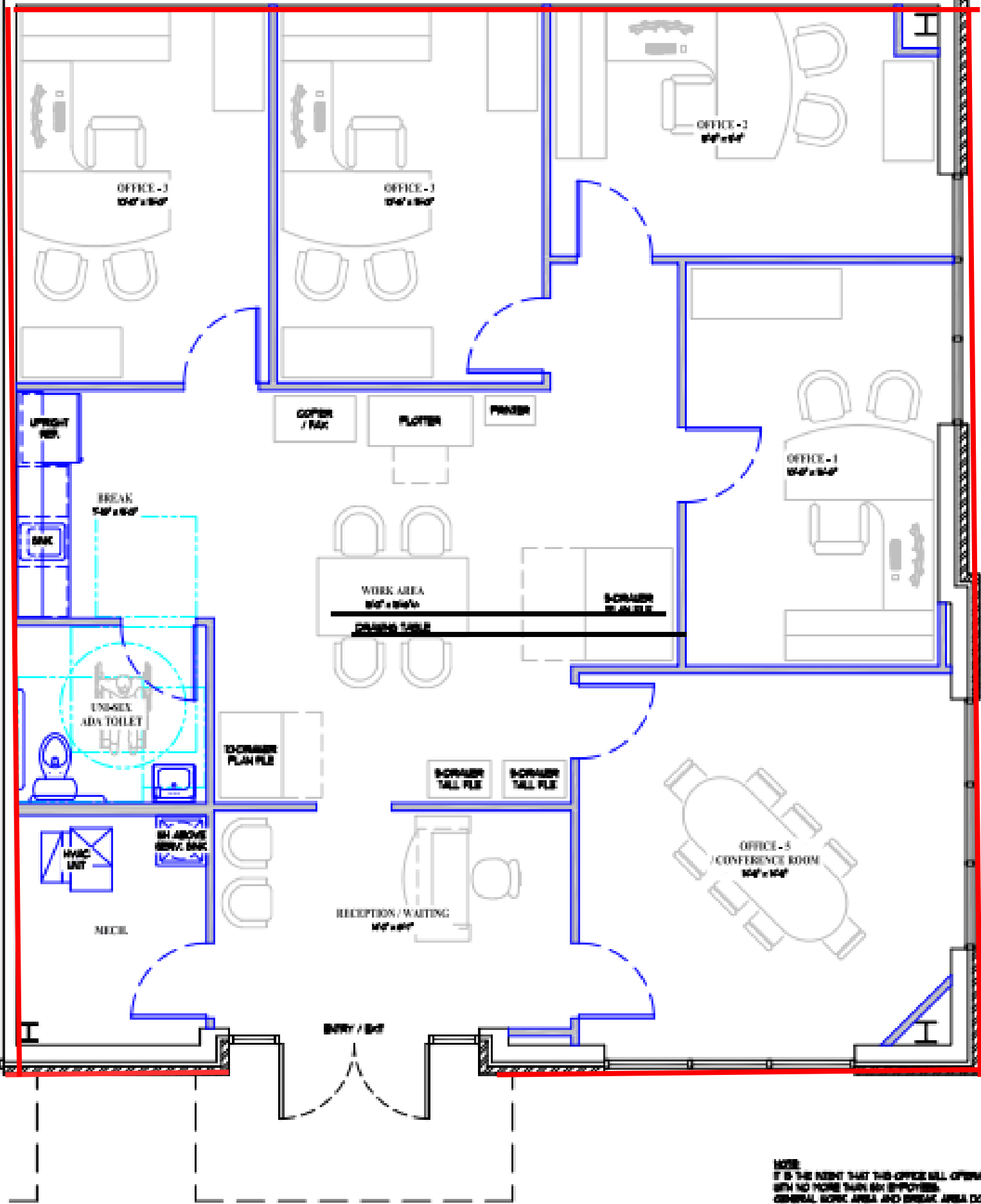
COMMERCIAL SPACE

Office space located in southeast Columbia, MO

- Size: 1643 Sq. Ft
- \$25 PER SQ. FT. + NNN

TRAVIS H. MCGEE:

Office: 573-443-4521 Cell: 573-489-3311 Email: travis@thminvestmentsllc.com



NOTE:
 IT IS THE AGENT THAT THIS OFFICE SUITE OPERATE
 WITH NO MORE THAN SIX EMPLOYEES.
 GENERAL WORK AREA, AND BREAK AREA DO NOT
 CONTAIN A PERMANENT OCCUPANT AND
 ARE TO BE SHARED BY THESE EMPLOYEES.

